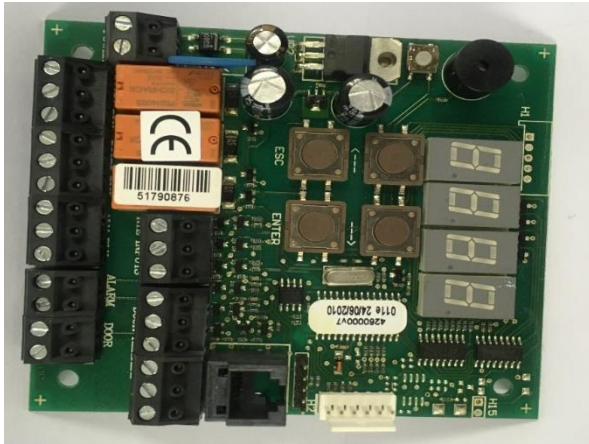


DorTag Plus OEM Stand Alone Proximity System



ONE OR TWO DOOR CONTROLLER

- *Personnel access control*
- *Motorized gates and doors*
- *Parking application*
- *Arming of alarm*
- *Switch application*

The DorTag Plus is a two-door controller accommodating two weigand readers that work up to 150m from controller, door contact input, RTE input and allows for 2000 users. Multiple user types, multiple masters, supervisors and standard users.

FEATURES

- 1 or 2 door access control (1 door entry/exist with antipassback or 2 door entry)
- Programmable by master cards and on-board button
- 2000 card capacity (Master, Supervisor and User levels)
- Fire Alarm input will open doors in case of emergency
- Door monitoring (Door open/Door forced)
- Voltage and suspending of cards
- Memory Stick function

SPECIFICATIONS

VOLTAGE	12V AC/DC
MAXIMUM CURRENT	300mA @12V DC (2 Reader version)
RELAY OUTPUT	Doors – 2 x change over relay contacts Alarm – change over relay contacts
RELAY RATING	3A @ 250V AC
OUTPUT MODES	Selectable pulse (250ms – 60s)/latch
SOLID STATE INPUT	2 x Door Monitor 2 x Free Exit 1 x Fire alarm
PROGRAMMING	Master cards (unlimited)/ On-board buttons
DISPLAY	4x7- segment LED Audible Buzzer
DIMENSIONS	150mm(L) x 100mm(W) x 26mm(D)
OPERATING TEMPERATURE	-10°C to +60°C

(The Company reserves the right to amend product specifications and information without notice.)

PLEASE CONTACT OUR SALES TEAM +27 31 700 8099 for further information.

PART OF THE MARANTEC COMPANY GROUP
OPENING DOORS IN SOUTH AFRICA
PROUD SUPPORTERS AND SUPPLIERS OF